



PHOENIX LOGISTICS

Strategic Real Estate. Applied Technology. Tailored Service.



STRATEGIC REAL ESTATE. APPLIED TECHNOLOGY. TAILORED SERVICE.

Logistical support covers a wide variety of disciplines, from warehouse management to freight brokerage. Phoenix Logistics provides support in locating and attaining the correct logistics solutions based on each business's individual needs and requirements.



ABOUT PHOENIX LOGISTICS

The Phoenix Logistics team is driven by a sense of urgency, determined to be uniquely remarkable, and strengthened by a state-of-the-art warehouse management system. Tell us your challenges; let us provide you creative options and competitive solutions.



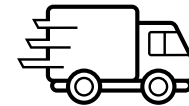
DISTRIBUTION SERVICES

A key factor in an efficient and cost-effective distribution network is a flexible 3PL partner with experienced staff, state-of-the-art logistics technology, and access to strategically located real estate. Phoenix has assembled a team of professionals with years of supply chain experience and the skill to utilize state-of-the-art warehouse management systems (WMS) to increase labor efficiency, eliminate waste, and reduce your cost.



REAL ESTATE

Facility cost and location can have a significant effect on your logistics budget. At Phoenix, we are experts in capitalizing on renovating and repurposing properties near key transportation lanes, allowing us to provide space at very competitive rates throughout most US markets.



TRANSPORTATION MANAGEMENT

Phoenix Logistics will take on the transportation coordination responsibilities as your lead logistics provider (LLP) to facilitate all of your transportation requirements to and from our facility. By working with our carrier partners, we can provide some of the most competitive rates available in the industry.

PHOENIX WAREHOUSING

The Phoenix Logistics team is driven by a sense of urgency, determined to be uniquely remarkable, and strengthened by a state-of-the-art warehouse management system. Tell us your challenges; let us provide you creative options and competitive solutions.



Let us show you what **Value Creation** looks like when coupled with the right **Opportunity** and a passion for exceptional **Execution**.



WHAT MAKES US DIFFERENT FROM OTHER 3PLs?

By utilizing our strategic real estate space, coupled with our state-of-the-art WMS and drive for customer satisfaction, Phoenix Logistics will continue to create value within our customers' supply chains.

01

EXPERIENCED PERSONNEL

The Phoenix Logistics staff has in-depth experience in supply chain management and design.

02

COMPREHENSIVE LOGISTICS

We provide services for attaining the correct logistics solutions based on your business's unique needs.

03

WIDE-RANGING SUPPORT

Our reach extends all across the United States, allowing us to connect clients with the right contractors no matter where they are located.

04

NEGOTIATION

One of the final stages in any business agreement is negotiation. Our team contains experts in leveraging your business profile for your benefit.

05

DISTRIBUTION & FULFILLMENT MANAGEMENT

Phoenix Logistics are your distribution partners and have the experience to handle your distribution and fulfillment requirements.

06

ECONOMICAL RATES

Our experience and industry contacts give us the ability to provide excellent rates for exceptional logistics services.

WAREHOUSE MANAGEMENT SYSTEM (WMS)

WMS

Ramp Systems is an Enterprise Software and Services Company dedicated to providing complete solutions exclusively to the Logistics Industry. Software and services offered include Warehouse Management, Supply Chain Execution, EDI, e-Commerce, Application Integration, and Client Web Portals. Rapid growth as a result of widespread adoption of Ramp Systems' advanced solutions offerings has resulted in approximately 350 customers in 10 countries using Ramp technology and services each day.



RAMP SYSTEMS

System Functionality Includes:

- Pick/Pack
- Order Fulfillment (B2B & B2C)
- EDI
- Dynamic Reporting
- Directed Putaway and Picking
- E-Commerce
- Cross Docking
- Transportation Management

MEET OUR TEAM



ROBERT KRIEWALDT

SENIOR VICE PRESIDENT

As Senior Vice President for Phoenix Logistics, Mr. Kriewaldt oversees the company's day-to-day operations as well as corporate strategic development. With more than 25 years of experience in the industrial real estate and logistics industries, Mr. Kriewaldt boasts extensive expertise in real estate practices as well as third-party logistics operations, contract negotiation, and new business development. Mr. Kriewaldt proudly fosters long-lasting business relationships by putting the customer first and creating mutually-beneficial partnerships for all involved. He also holds a Master's in Business Administration from the University of Texas & a Juris Doctorate degree from Marquette University.

Email: robert@phoenix3pl.com

Direct: 920.915.9746



KEVIN ROSE

VICE PRESIDENT

Kevin is a Supply Chain Professional with over 29 years of experience in warehousing, contract packaging, and order fulfillment in the B2B and B2C distribution sector. Kevin spent more than 15 years in the 3PL service industry beginning with Warehouse Specialists overseeing distribution operations, leading WMS implementations, and developing and on-boarding new accounts. Prior to joining the Phoenix Logistics team, Kevin held the position of Logistics Manager with Leman USA and General Manager with XPO Logistics.

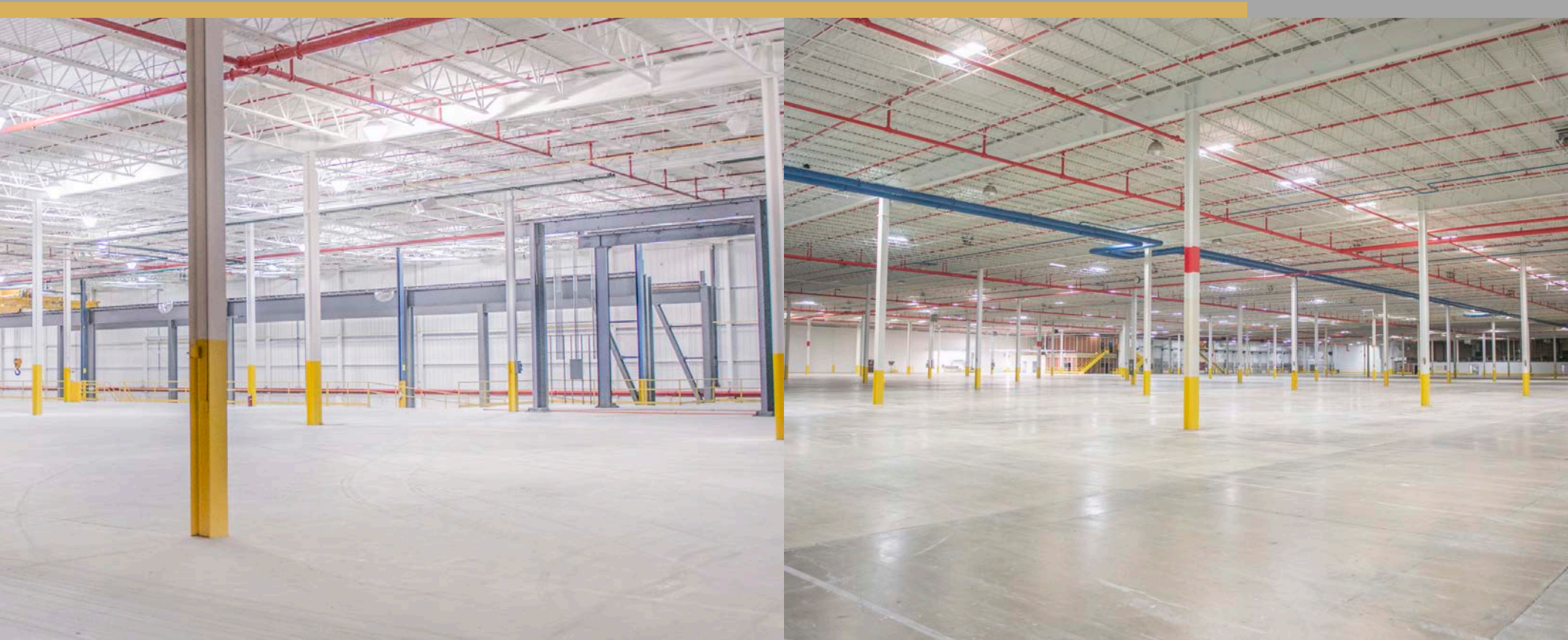
Email: krrose@phoenix3pl.com

Direct: 414.301.6452

Mobile: 262.770.1615

PHOENIX

DISTRIBUTION



- SITE SELECTION
- PICK/PACK
- ORDER FULFILLMENT (B2B & B2C)
- EDI

- WMS WEB PORTAL REPORTS
- E-COMMERCE
- CROSS DOCKING
- TRANSPORTATION MANAGEMENT

ABOUT PHOENIX COMPANIES

Looking forward, Phoenix will continue applying its disciplined investment strategy to commercial real estate opportunities while implementing new technologies and adding resources.

In 1991, Frank Crivello created two private trusts, Irrevocable Children's Trust and Irrevocable Children's Trust No. 2 (the "Trusts"), for the benefit of his children, Joseph and Anthony Crivello. Later that year, through their majority interest in the First Berkshire Business Trust, the Trusts completed Wall Street's first single-tenant retail property-backed securitized financing. That transaction, secured by 43 Kmart retail locations and warehouse stores, became a precursor for CMBS structures commonly used over the last twenty-five years.

In 1994, David Marks became trustee of the Trusts, and Phoenix Investors ("Phoenix") was created as the management company of the Trusts' investments.

Throughout the 1990's, Phoenix focused on single-tenant arbitrage opportunities available across the country. To this end, Phoenix exploited various market inefficiencies that existed including information inefficiencies, differences in credit perceptions of unrated regional and national tenants, and innovative Wall Street financings, the combination of which produced above-market returns.

From 2002 to the beginning of the Great Recession in 2007, our management team concluded that prevailing real estate opportunities and trends did not meet its disciplined risk/reward analysis. Phoenix suspended new acquisitions of commercial property and instead focused on improving its existing portfolio.

Since the Great Recession, Phoenix has aggressively used its experience to source, identify, and harvest unprecedented commercial real estate opportunities. Currently, our focus is on maximizing underappreciated asset classes including Class B and C Industrial properties, portfolio and REIT dispositions, and creatively working with corporations, banks, and other institutions on underperforming asset dispositions.

Phoenix Logistics was created to leverage the Phoenix Investor's real estate portfolio as way to help companies lower their logistics costs while at the same time helping economically-challenged areas. Phoenix Logistics has coupled an aggressive investment in WMS and related technologies with competitively priced space offered by Phoenix Investors to provide unique value to its clients' supply chain needs.

OUR VALUES

By utilizing our strategic real estate space, coupled with our state-of-the-art WMS and drive for customer satisfaction, Phoenix Logistics will continue to create value within our customers' supply chains.



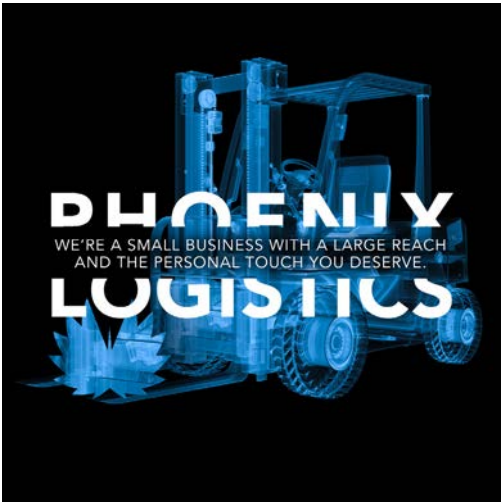
STRATEGIC REAL ESTATE



APPLIED TECHNOLOGY



TAILORED SERVICE



PHOENIX SOCIAL MEDIA

f PHOENIX3PL | PHOENIX3PL | in PHOENIXLOGISTICSLLC | @ PHOENIX3PL

STRATEGIC REAL ESTATE

TAILORED SERVICE

PHOENIX 3PL

PHOENIX LOGISTICS

DISTRIBUTION SERVICES

PHOENIX LOGISTICS

PHOENIX LOGISTICS

TRANSPORTATION MANAGEMENT

PHOENIX WAREHOUSING

The Phoenix Logistics team is driven by a sense of urgency, determined to be uniquely remarkable, and strengthened by a state-of-the-art warehouse management system. Tell us your challenges let us provide you creative options and competitive solutions.

PHOENIX LOGISTICS, LLC

PHOENIX LOGISTICS

WAREHOUSE & DISTRIBUTION

PHOENIX LOGISTICS

REAL ESTATE

DISTRIBUTION

TRANSPORTATION

PHOENIX LOGISTICS

We provide services for attaining the correct logistics solutions based on each business's individual needs and requirements.

PHOENIX LOGISTICS

PHOENIX SOCIAL MEDIA

f PHOENIX3PL | PHOENIX3PL | in PHOENIXLOGISTICSLLC | @ PHOENIX3PL



PHOENIX LOGISTICS

Strategic Real Estate. Applied Technology. Tailored Service.